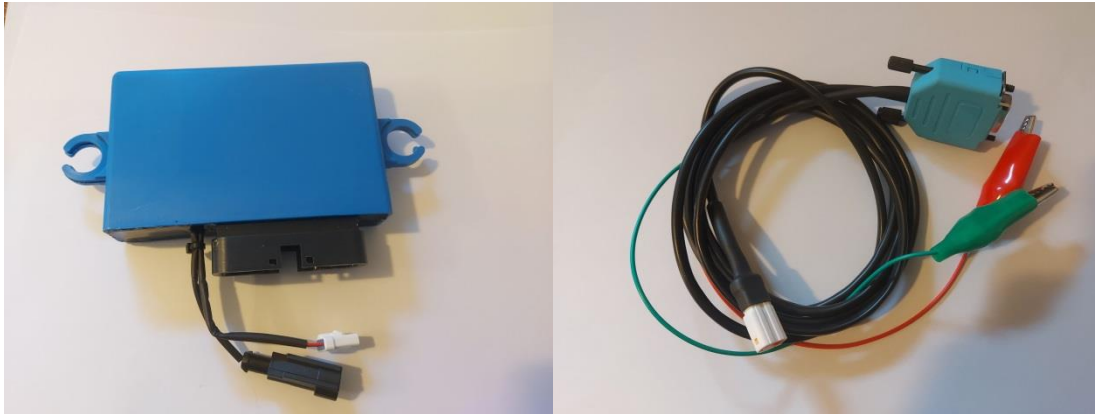




Type A ignition - Honda RS125



WARNING

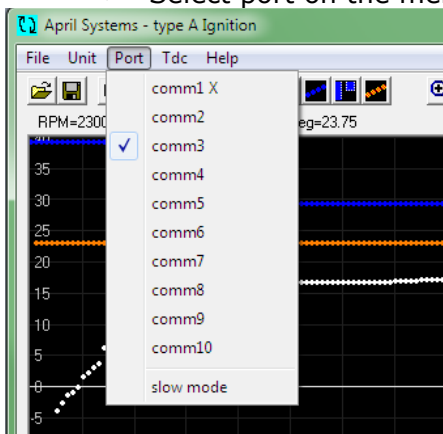
This programming software has the ability to program the ignition unit with unsuitable maps. There are no upper or lower level limits or restriction on map values.

COMM PORT

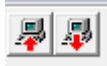
- Use a serial comm port or USB to serial adaptor - The best results are with a USB to serial adaptor using a FTDI chipset
- Find your comm port number by [right click] my computer / properties / Hardware / Device manager
 - Press the [+] on ports (COM & LPT)
 - Make note of the comm port number that is listed and free or use a USB adaptor that is listed and free

START THE SOFTWARE

- Select port on the menu bar / choose the port number found in section 1)



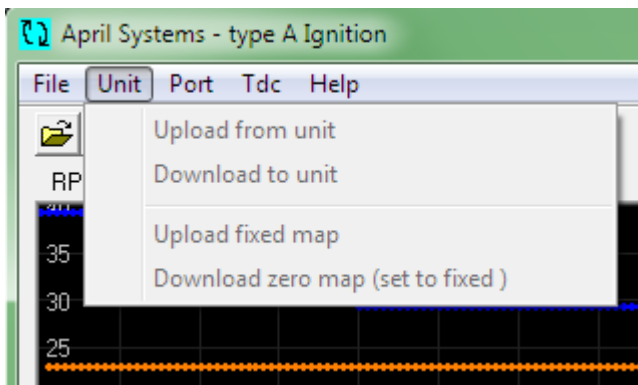
- Power up the unit
- Plug the programming lead into the unit
- Using the battery connection connect a 12V battery
- Check for connection the upload and download buttons will become active




- If no connection then select another port and then re-select the correct port
- If still no connection, close and restart the software
- if uploading or downloading fails after starting select 'port' and tick 'slower comms'

MAPS

From new if no map is loaded onto the unit then the internal fixed map will be used. The fixed map in the unit cannot be written to, but can be read back by the software. (menu / unit / upload fixed map)



If the map can be cleared to zero by the delete map button  if a zero map is loaded into the unit then the fixed map will be used by the unit

Maps can be opened and saved in 'ign' format (open and save buttons)

BPS maps can be opened and the software will convert to suitable values (bps button) some rounding error may occur save the loaded map in 'ign' format and these maps must be tested to ensure that they are correct.

UPLOAD / DOWNLOAD

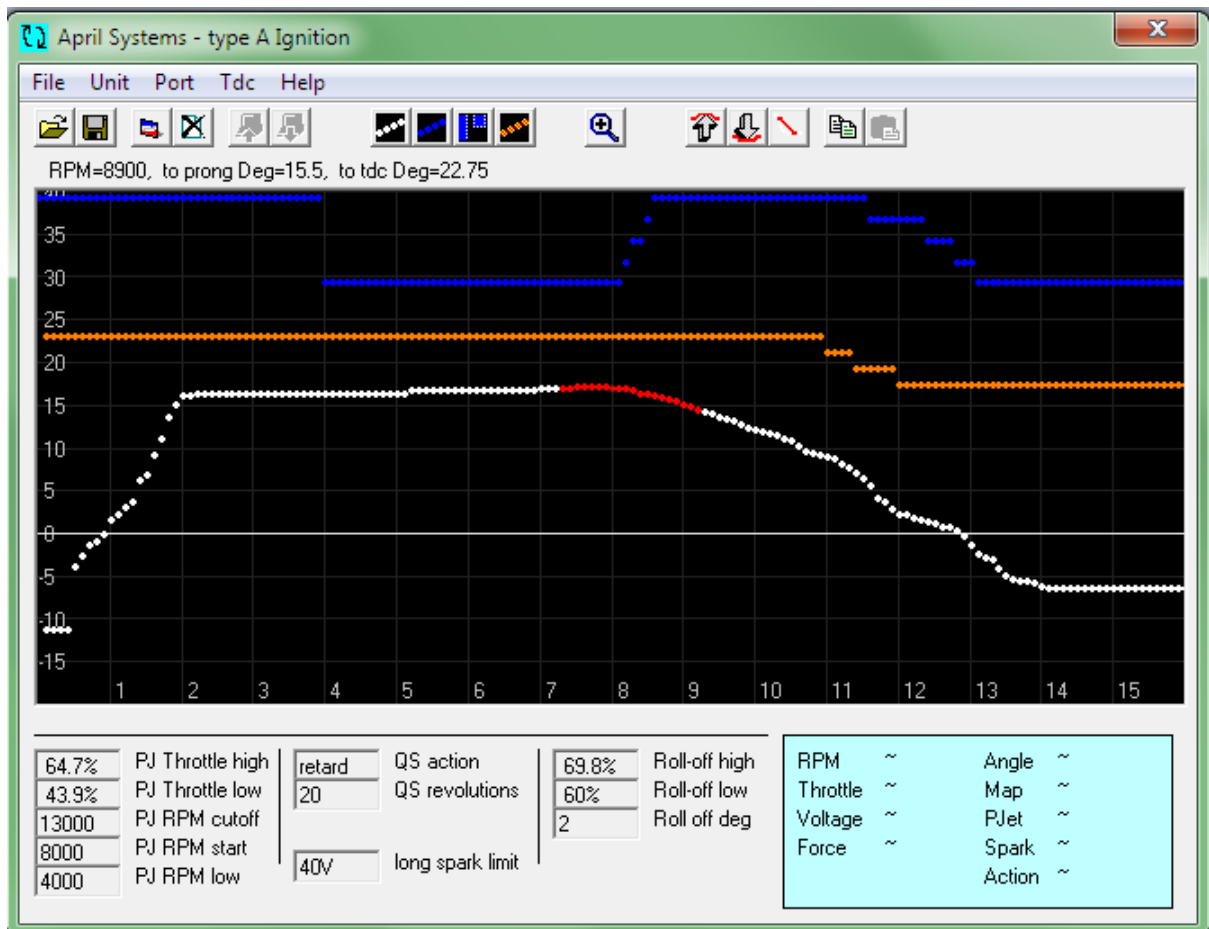
Upload and download buttons will send the data to the ignition unit or read the data back

MAP EDIT

Use the map selection to choose which to edit/view, ignition = white , power jet blue, power jet v throttle blue boxes, or spark = orange



Left click on the map to select one point, click on a second or more points and the points between are selected –selected points are shown red



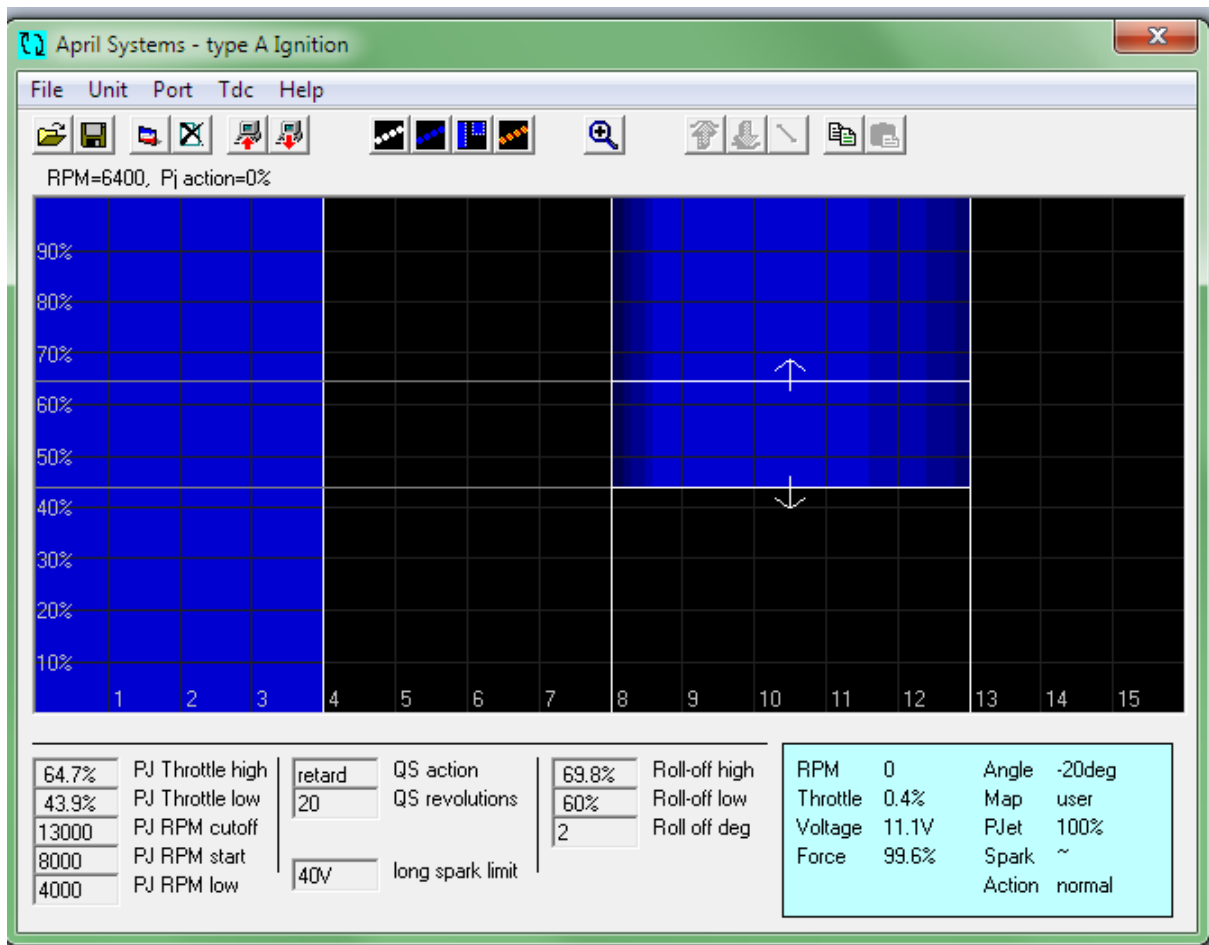
To deselect the area right click on the map.

A selected area can be moved the up or down, the up down buttons will move the position of the points by 1/4th of a degree at a time



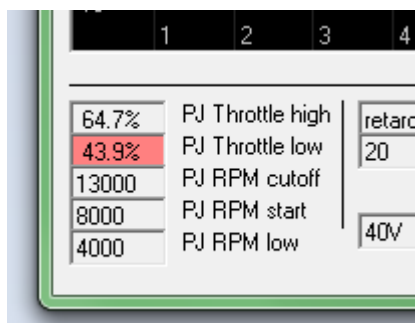
With the selected area clicking the straight button will straighten the points between.

The Power jet v throttle map is view only – alter the map by the power jet map and the PJ numbers edit

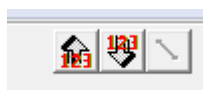


NUMBERS EDIT

The power jet, throttle-off retard and Quick shifter values can be altered by clicking on the relevant number, this will turn red.



The selected orange number can be moved up or down by clicking the up or down buttons



Power jet

The five numbers set the limits of operation of the Power jet map and when the jet is forced on / off. See above screen shot

PJ Throttle high - throttle position required to bring in the PJ map if the throttle is increasing (between RPM start and RPM cut-off)

PJ Throttle low - throttle position that below the PJ will be not in the map and off (between RPM start and RPM cut-off)

PJ RPM cutoff – Power jet will be off above this RPM

PJ RPM start – start of the mapped area

PJ RPM low – below this power jet is forced on

Quick shifter

The input line is triggered by a connection to Chassis by a suitable sensor

QS action – disabled / retard by 45 degrees or cut the ignition

QS revolutions – the number of engine cycles to cut or retard for

Long Spark limit – Only available as a special order

Throttle Roll-off

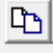
If the throttle is dropping passing though these values the ignition timing is retarded by the set number of degrees

Roll-off high the higher limit of the roll-off this should not incur on the full throttle value and should be 3-5% lower than full throttle to ensure it is not activated when not needed.

Roll-off low the point when the decreasing throttle retard is disconnected

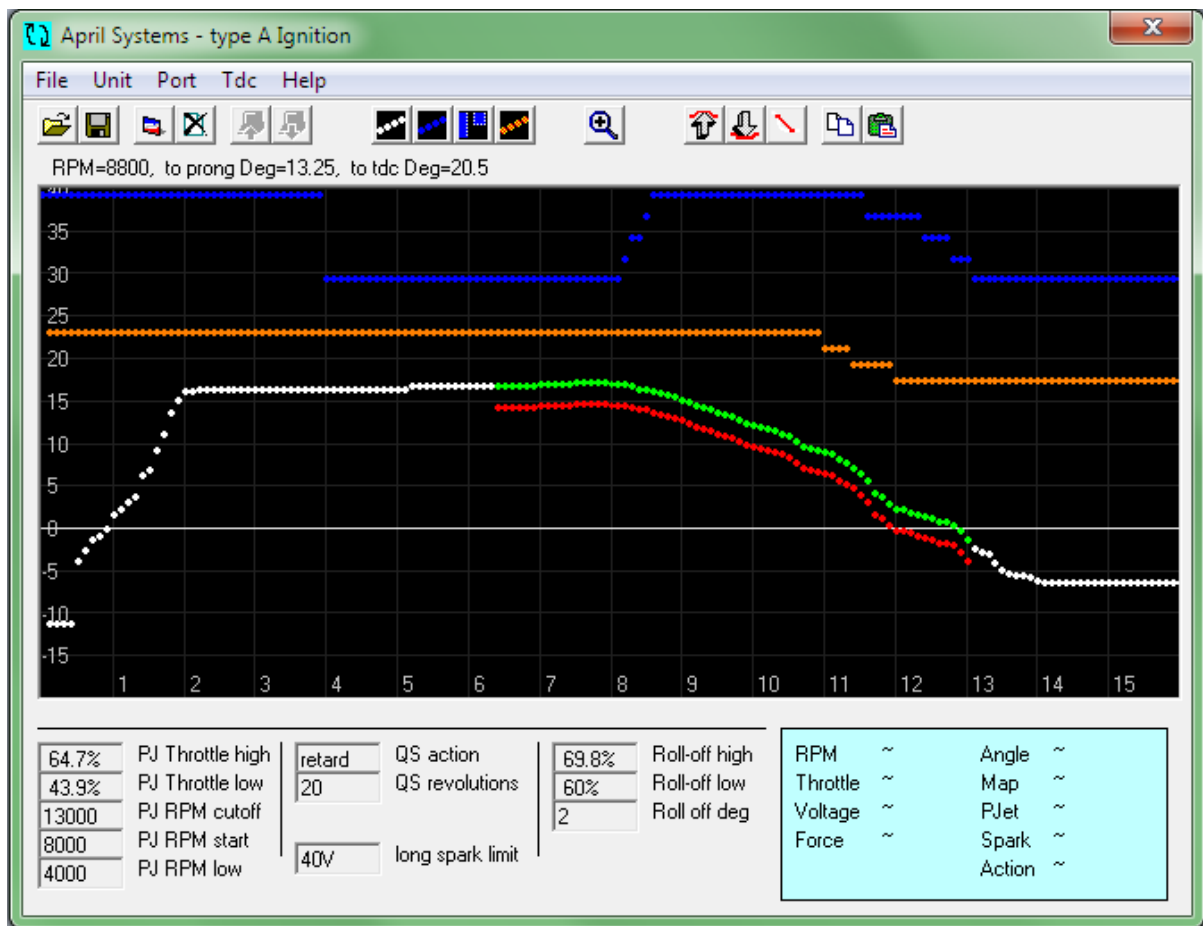
Roll off deg the number of degrees retard applied when activated

REFERENCE MAP

Clicking the copy button  will take a copy of the current map as a reference map, the current map can then be altered or a new map loaded, the copied map will be shown as green behind the current map, to show the difference.

Clicking the copy button again will turn off the reference map.

Clicking the paste button  will overwrite the current map with the reference map



ZOOM



Clicking the zoom button magnifies the 8,000RPM to 16,000RPM area, clicking the button again returns to the full RPM range

TDC

The Top dead centre is set by the static advance the unit shows the degrees from the end of the large rotor plate (prong) and the expected true TDC value (TDC estimate). The resultant TDC will be altered by the delay in the pick-up coils response at high RPM. Selecting 'prong' or 'TDC estimate' will move the graph Y axis to suit.

WARNING - Always check maps are suitable for use.

April Systems Design Limited Disclaimer

All parts supplied by April Systems Design Limited are not for highway use. All parts supplied by April Systems Design Limited are not guaranteed when used in competition events. As such, it is a condition of our making all parts available that it is solely the decision of each individual, rider, team member or team whether they choose to use any part supplied and in doing so, absolve the manufacturer and April Systems Design Limited of any or all such, including damage to equipment and/or injury to personnel irrespective of how caused. All parts remain property of April Systems Design Limited until paid for in full. All 'special order' parts that are ordered under the instruction of the customer are non-returnable and non-refundable

www.aprilsystems.co.uk

Director: Michael Sharpe, Beng Msc Msc AMIEE

April Systems Design Ltd is a registered company in England and Wales
Company Number 4747642